



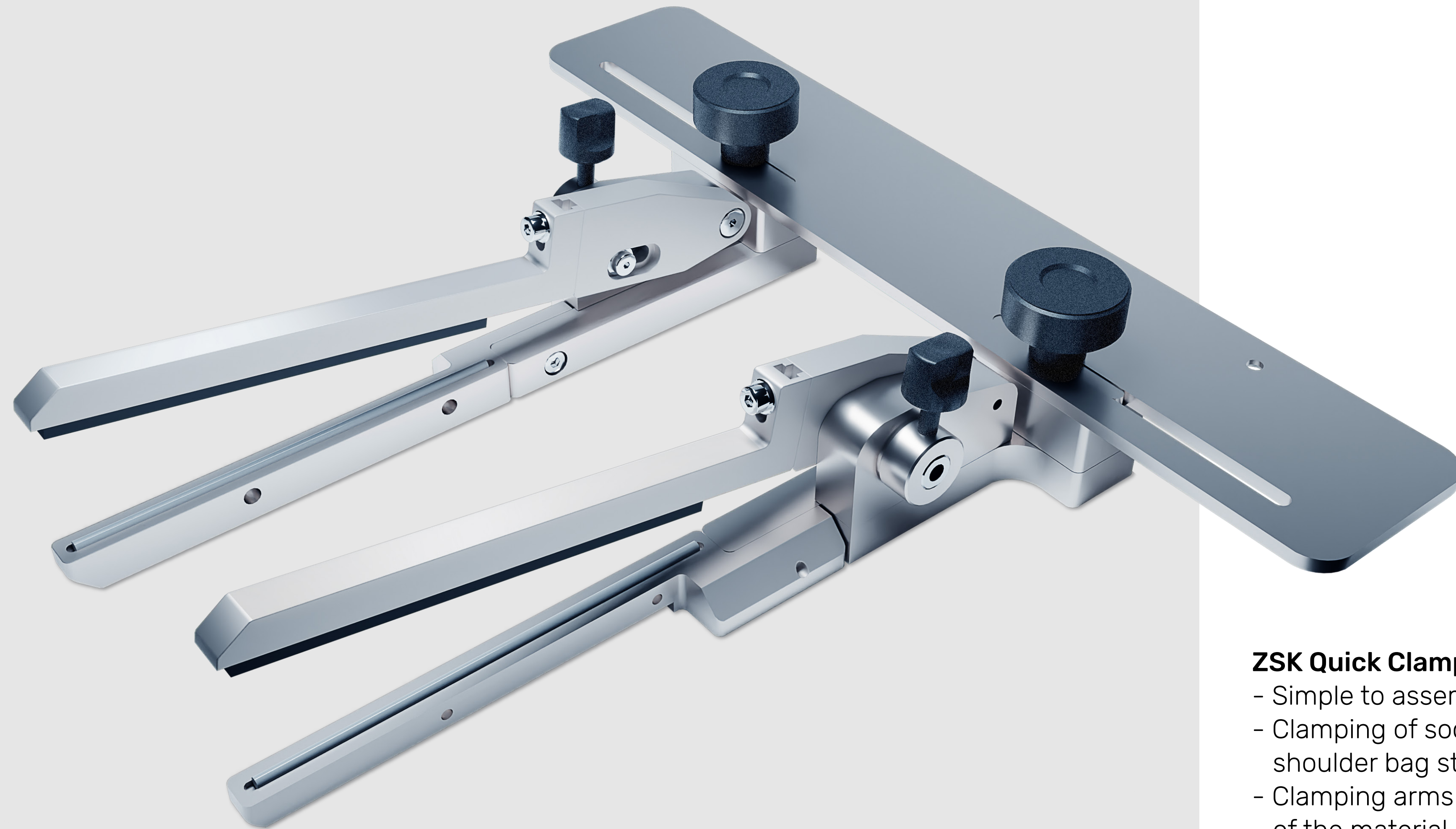
06 | 2022

ZSK technical News and Innovations



**Pneumatic clamping frame with adjustable depth**

- No more intervention in the production process required, due to fully automated retensioning in the side pass over long distances (up to 7.6m approved).
- Low material waste due to continuously adjustable embroidery field depth (1300-1600mm).
- Clamping and tensioning of up to 4 layers of material on top of each other.
- Clamp stroke adjustable (0-38mm).
- During the side pull-through, the material is not deflected but pulled through in a straight direction. For this purpose, the side clamps are moved upwards to avoid contact with the material.



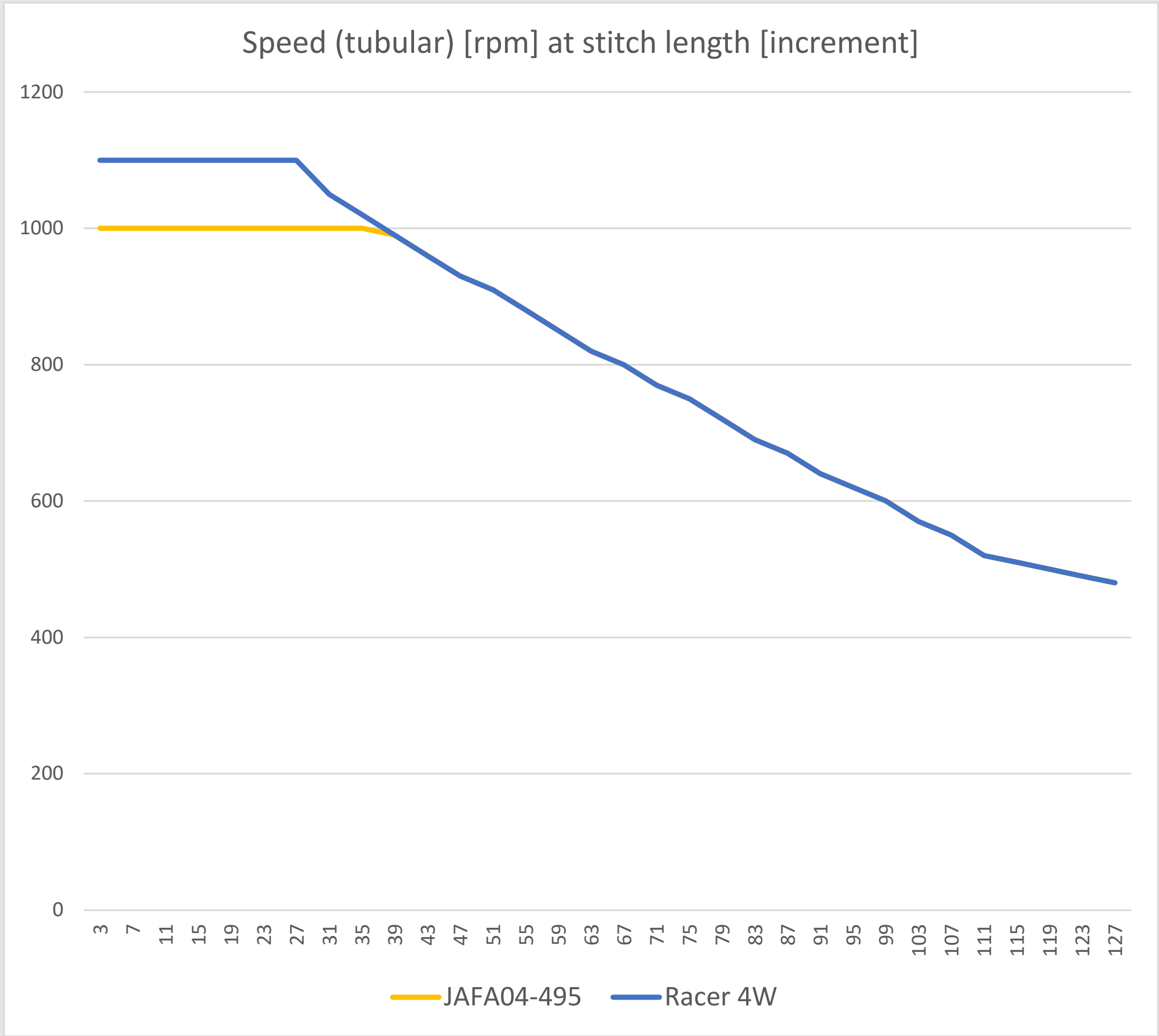
### **ZSK Quick Clamp (ZQC)**

- Simple to assemble and easy to use.
- Clamping of socks, bracelets and collars, dog leashes, shoulder bag straps and many other products.
- Clamping arms are adjustable in height to the thickness of the material.
- The distance between the clamping arms can be adjusted to the product and the required embroidery field width (85-190mm).



#### Laser cutting for single head machines

- Laser cutting of applications
- Multilayer application
- Reverse application
- Laser boring
- Adjustable intensity and cutting speed
- Separate laser control unit triggered by commands in the embroidery design



**Performance upgrade - Racer-Series**

The Racer series has received a performance upgrade that allows 1100rpm in tubular operation for stitch lengths up to 27Inc. Up to a stitch length of 39Inc. higher speeds are possible in comparison to the present 1000rpm. The upgrade is not intended for JAJA machines.





ZSK Stickmaschinen GmbH  
Magdeburger Str. 38-40  
47800 Krefeld

Fon: +49 (0) 2151 444 0  
Fax: +49 (0) 2151 444 170  
E-Mail: [zsk@zsk.de](mailto:zsk@zsk.de)