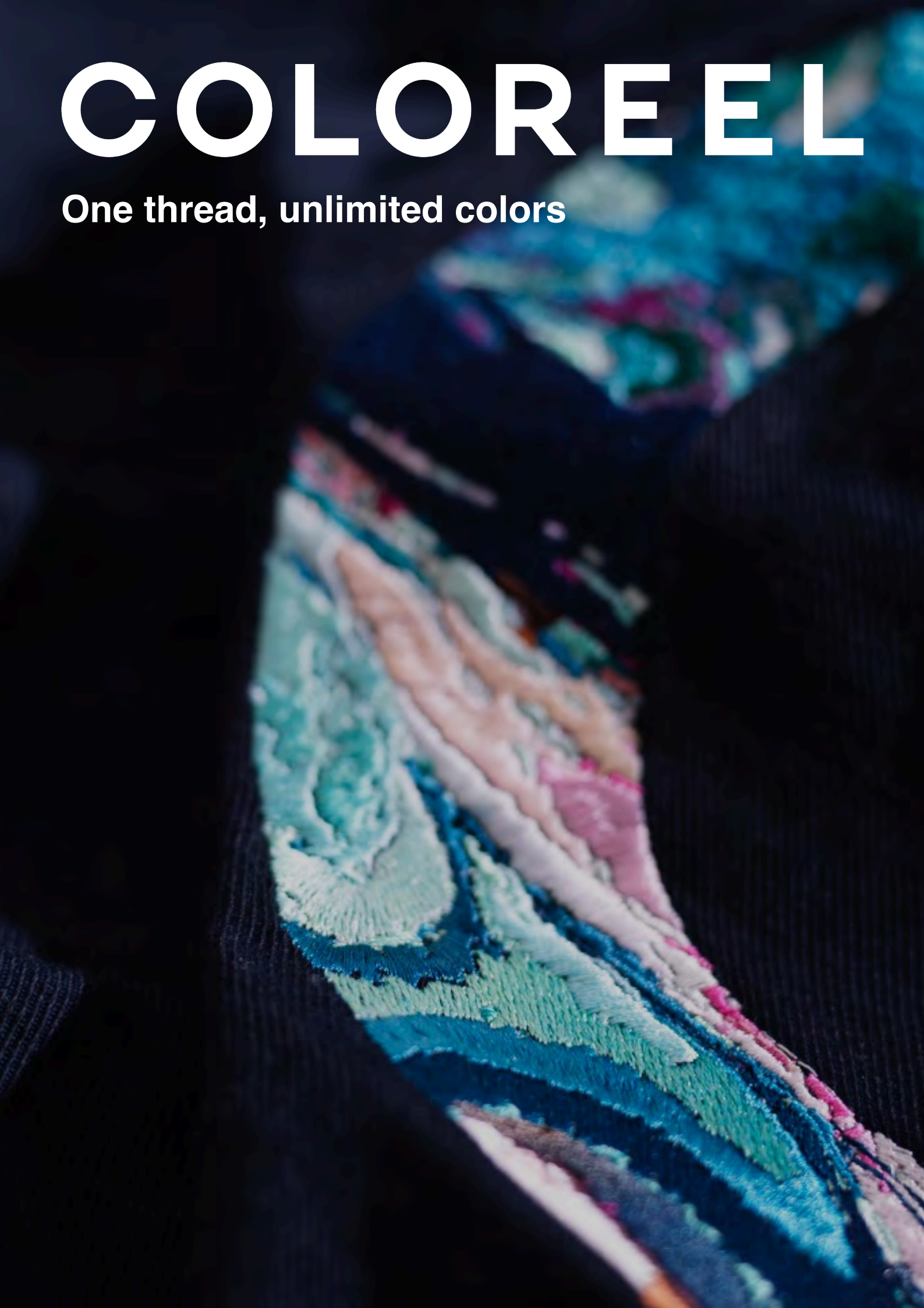


COLOREEL

One thread, unlimited colors





Introducing Coloreel

This brochure covers what Coloreel is, what you can do with Coloreel and how it changes embroidery.

By coloring a single thread on demand, new possibilities open up. Gradients, complex color transitions and detailed effects become natural parts of embroidery while production stays simple and efficient.

Driven by Swedish innovation, Coloreel keeps pushing toward endless creativity while reducing waste and supporting a more sustainable textile industry. By coloring thread on demand, the need for water dyed thread is completely removed.

Made for the future of textiles.

Multi Thread

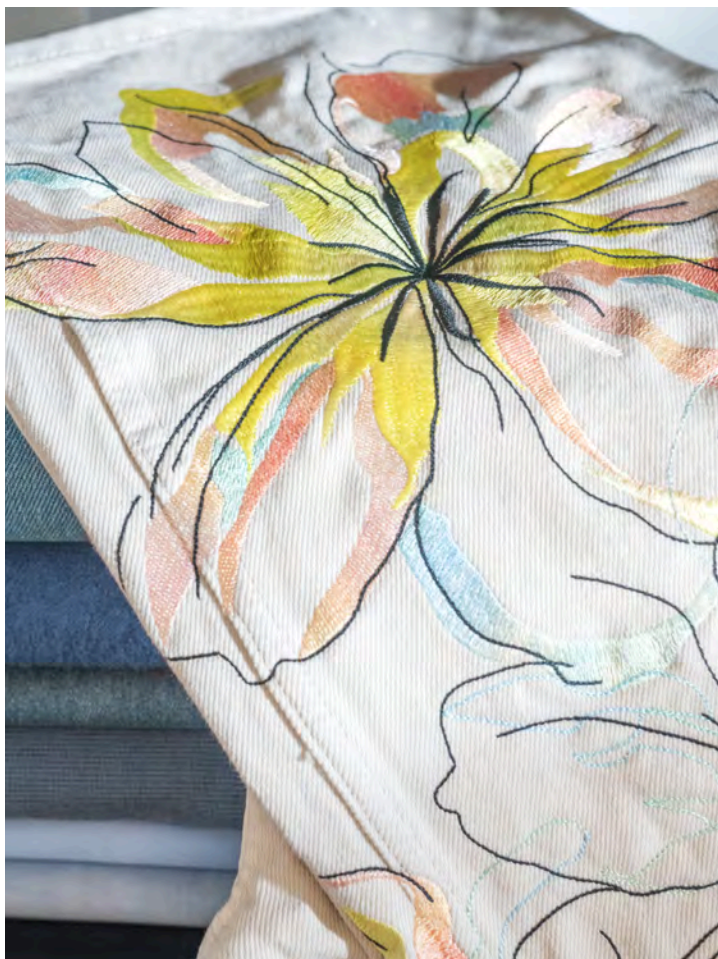
Coloreel's multi-thread function allows you to combine digitally colored thread with standard pre-dyed threads. This enables you to expand your creative range while maintaining efficient production without the need for multiple needles or complicated setups.

What's possible?

- Combine Coloreel thread with traditional spools in one embroidery file
- Mix materials like metallic, cotton, wool, and various thicknesses
- Add texture, contrast, and special finishes to your designs
- Use standard threads for large monochrome areas to save material
- Thread extra needles with alternative threads for complex designs
- Expand creative possibilities with new color and material combinations

How it works?

The multi thread uses the additional needles in your embroidery machine to run standard thread alongside the single Coloreel thread. This makes it possible to include materials and effects that can't be digitally produced, while keeping everything within a single design file. It's a seamless way to merge digital coloring with pre-dyed threads, balancing creative freedom with production efficiency.





Noise Effect

The Noise effect introduces randomness into the thread, creating a natural, textured look. It is perfect for adding depth and movement to your designs without repetition or patterns, making your embroidery feel more dynamic and real.

What's possible?

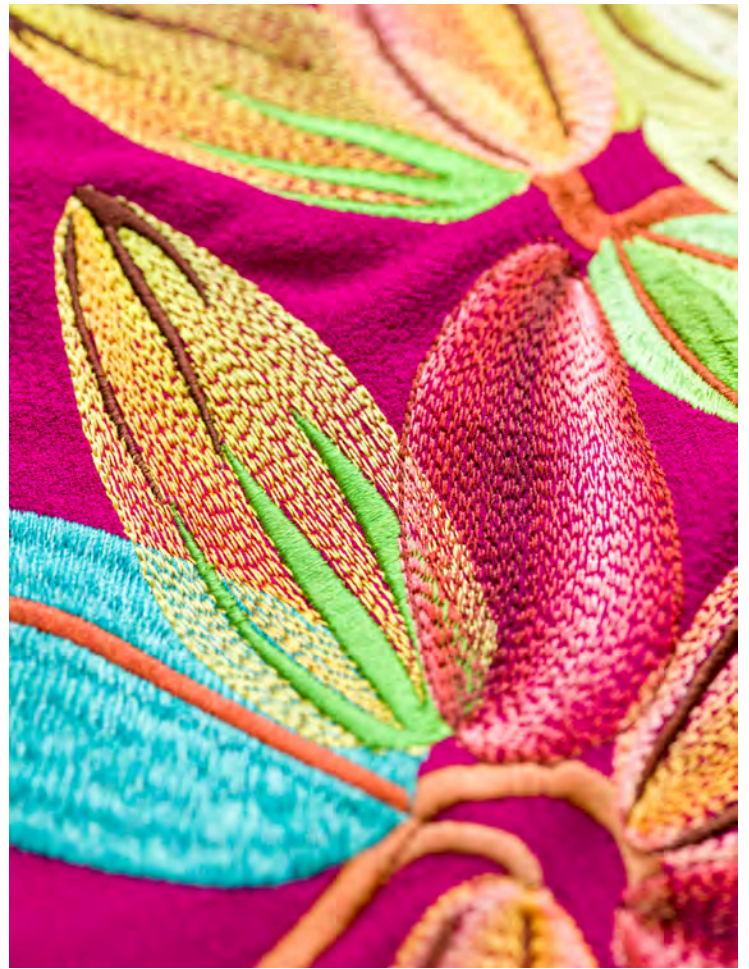
- Add depth and variation by printing a selection of colors in sequence
- Control how much each color appears for subtle or dominant tones
- Ideal for organic surfaces, backgrounds, and natural materials
- Print unlimited colors in random order
- Create natural textures that mimic grass, fur, or hair



How it works?

The noise effect uses Coloreel's precise coloring process to introduce gentle randomness into the thread. You can decide which colors are dominant and adjust the balance to create anything from soft variation to strong contrast. Every stitch becomes slightly different, resulting in a textured, natural look that standard embroidery can't achieve. It's a simple way to bring movement, warmth and depth to any design.





Gradients

The Gradient effect allows you to blend colors seamlessly on a single thread, creating movement and fluidity within your designs. This process offers a new level of creativity and precision that traditional embroidery cannot achieve.

What's possible?

- Blend two or more colors with precision
- Replicate intricate color details with accuracy
- Use as many colors as you need with one thread
- Achieve full creativity with a new way of blending colors
- that doesn't require multiple threads
- Embroider designs that previously had to be printed

How it works?

The gradient effect is made possible through Coloreel's innovative thread coloring process. The thread is dyed on demand, giving you control of how colors shift, fade or merge. This makes true gradients possible in embroidery, bringing innovation, precision and creativity together in one thread.

Stripe Effect

Stripe effect applies repeating striped colors directly onto a single thread. It is a powerful way to introduce rhythm, movement, and variation into embroidery, from subtle accents to bold graphic patterns.

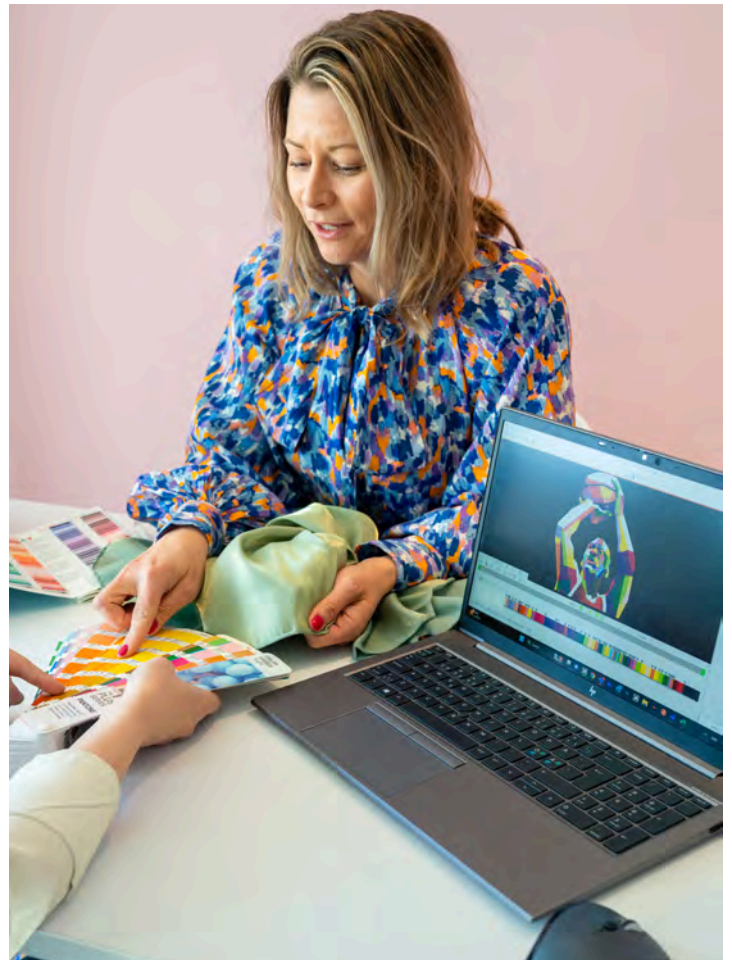
What's possible?

- Print unlimited colors in stripes on one thread
- Adjust stripe width, repetition, and color combinations
- Add depth and visual movement with perfect alignment
- Eliminate trims between color changes for a seamless result
- Reduce manual color changes and simplify digitizing
- Create bold graphics, details, and patterns more efficiently

How it works?

Coloreel applies each stripe directly to the thread as it's printed, letting you control color, order and width digitally. The thread shifts seamlessly between colors, creating natural depth and dynamic effects without changing spools. The result is efficient, expressive embroidery made possible by Coloreel's coloring innovation.





Color matching & importing colors

Color matching and importing colors allow you to build and manage your own color libraries directly in Coloreel. It is designed for teams that need exact tones ready for production, whether those come from brand guidelines, fabrics, threads, or printed references.

What's possible?

- Import any color and create a custom color library
- Manage and sort colors for different brands or projects
- Match colors using a spectrophotometer for consistent results
- Match to fabrics, threads, or printed materials with precision
- Reduce the need to keep large thread stock
- Avoid waiting for thread deliveries or special orders

How it works?

Import your preferred colors into the ITCU and save them as part of your personal or shared color library. Match new colors by scanning fabrics or thread samples with a spectrophotometer. It matches your selected color for embroidery or thread printing, keeping your output aligned with the tones you need.

Solid Colors

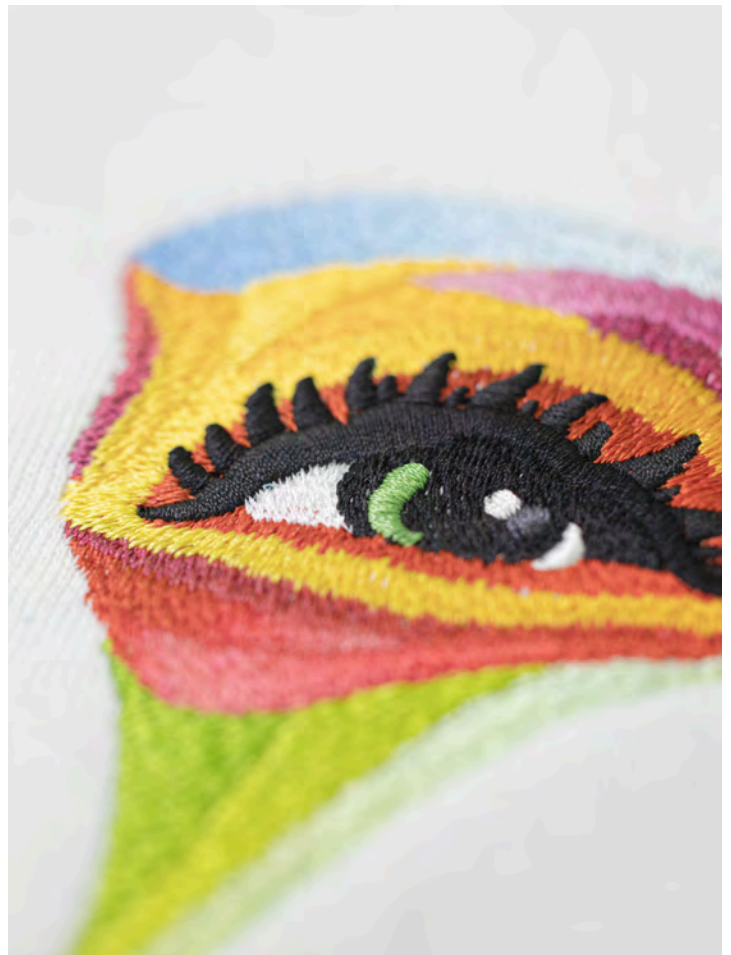
Solid colors let you produce any tone you need directly on a single thread. This removes the dependency on pre-dyed stock and custom thread orders, giving you more flexibility, less waste, and faster response in production.

What's possible?

- Print solid colors directly onto the thread
- Match embroidery to fabrics or brand colors
- Create shades that cannot be bought off the shelf
- Import chosen colors into the library and reuse them freely
- Use only the amount of thread needed in each color
- Avoid stocking multiple spools and simplify production

How it works?

Coloreel dyes the thread on demand, producing a solid tone of your choice. You can embroider in any color instantly or spool that same thread for other uses. By coloring the thread on demand, solid colors remove the limits of traditional thread libraries, giving you control, color freedom and less waste.



Swatch Printing and Thread Winder

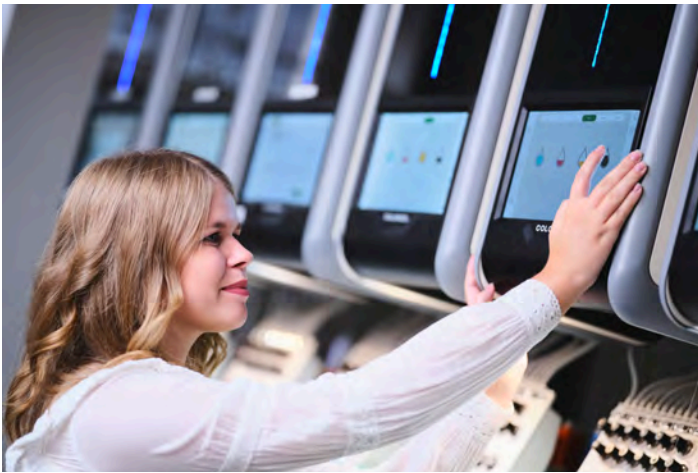
Swatch printing makes it possible to embroider or spool any single solid color directly from the ITCU. It is a fast way to test tones, create one-color embroidery, print thread for sampling, or produce small batches without changing spools or relying on stocked thread colors.

What's possible?

- Pick any color directly in the ITCU from a pre-loaded Coloreel library
- Import and manage your own color libraries in the software
- Print solid colors instantly for one-color embroidery or quick sampling
- Reduce stock needs by printing the exact tone required
- Use with the thread winder for sewing, sampling, or small-batch production
- Spool set lengths for gradients, or run stripe and noise effects continuously

How it works?

Import your regular embroidery files to your embroidery machine as usual. Swatch printing runs separately from that workflow. You create and manage your color libraries in the Coloreel software, then export those colors to the ITCU. From there, you simply pick the color you want to embroider or spool. The ITCU prints that one color onto the thread on demand. No extra setup. No waiting for thread orders. You get full flexibility to test designs, create variations, or produce one-color embroideries without switching spools.





Toolbox

Toolbox gives you a faster way to work with standard DST files by applying color changes directly to selected sections. It is especially useful for patches, panels, and small-batch production where speed, flexibility, and minimal setup time matter.

What's possible?

- Use original DST embroidery files directly and create multiple color files
- Switch colors quickly between panels and patches
- Build color files from a pre-loaded Coloreel color library
- Work seamlessly with Multi thread for faster production
- Reduce setup time for small-batch production runs

How it works?

Import the DST file and apply colors to each segment. Change one color at a time, pick colors directly in the Toolbox software and highlight each segment to confirm what you are coloring. The system reads the stitch data and colors each section exactly as selected. This replaces the need for multiple needles in standard embroidery with no need for re-digitizing and downtime. Just precise color changes for fast and flexible production.



COLOREEL

Contact us:

www.coloreel.com
info@coloreel.com

Follow us:

Instagram: @coloreel
LinkedIn: @coloreel
Facebook: @coloreelab
TikTok: @coloreel

